

Lithium Battery Coin Cell



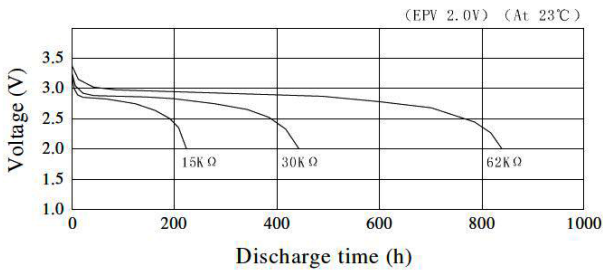
Specifications:

Battery Capacity	: 30mAh (on continuous discharge at 20°C under 30kΩ load to 2V end-voltage)
Battery Voltage	: 3V
Battery Technology	: Lithium
Battery Terminals	: Flat Top
Continuous standard load	: 62KΩ
Weight	: 0.8g
Battery IEC Code	: CR1220
Standard Discharge Current	: 0.1mA
Usable Temp. Range	: -10°C to +60°C
Storage Temp. Range	: 0°C to +30°C
Storage Humidity Range	: 40% to 75%
Outer Dimensions	: φ12.0mm (+0 / -0.3) 2mm (+0 / -0.2) (Dia. Overall Height)

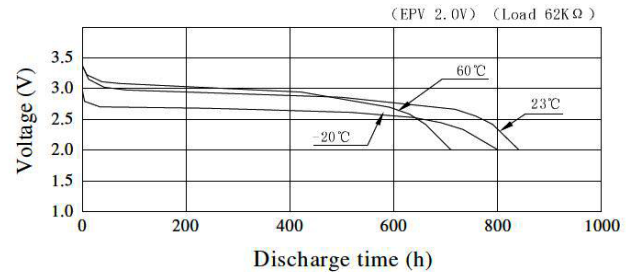
Terminals

Case Terminal	: SUS430+Ni-Plated
Cap Terminal	: SUS430+Ni-Plated

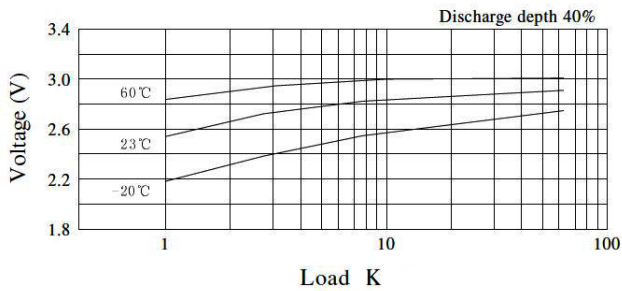
Discharge Characteristic



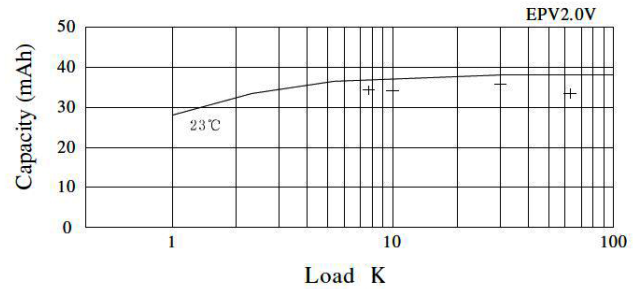
Temperature Characteristic



Load vs. Operating voltage

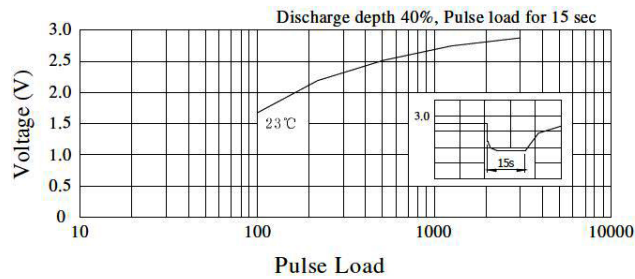


Load vs. Capacity

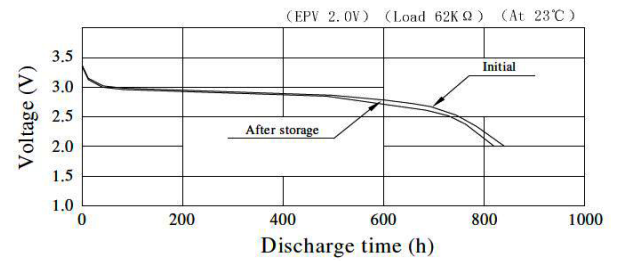


Lithium Battery Coin Cell

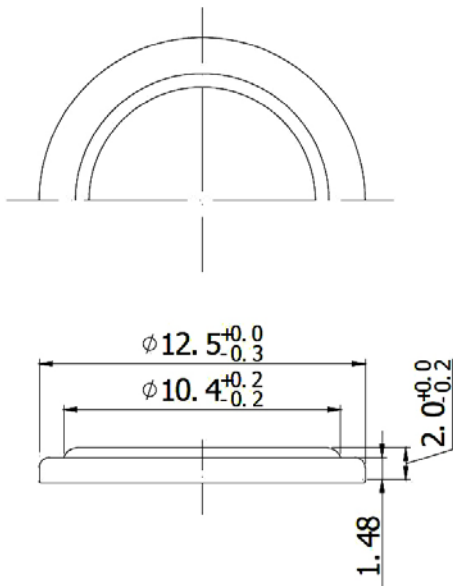
Pulse discharge characteristic



Storage characteristic



Storage at 60 ± for 30 days equivalent to storage at room temperature for 18 months



Dimension : Millimetres

Part Number Table

Description	Part Number
Coin Cell, Lithium, 3V, 38mAh	CR1220